

Read these instructions before commencing installation. Please give these instructions to the owner/occupier after installation to retain for future reference/maintenance.

IP20 240VAC~50Hz 50W Max.

These fittings are Class I and must be Earthed

## Important Information

It is recommended that these luminaires are installed and fitted by a qualified electrician ensuring the installation complies with current IEE wiring regulations & local building control. These products are designed for connection to a 240V~50Hz supply.

Any faulty, broken or damaged luminaires should be replaced immediately.

KSR will not accept responsibility for any claims arising from a poor installation.

Please Note: The limited warranty shall be deemed null and void in the following circumstances: Failure by the installer, end user or any third party to exercise caution to protect any covered product or part from outside damage, adverse temperature, humidity conditions, fluctuations in the electrical system or physical abuse as well as failure related to workmanship in the installation of the products or parts.

## Important User Advice

Always switch off mains supply before servicing.

KSR recommends cleaning with a soft lint free cloth to maintain the finish, do not use abrasive cleaners on this product.

At the end of life the luminaire is classed as WEEE under directive 2014/30/EU and should be disposed of in accordance with local legislation.

## Installation Procedure

Familiarize yourself with the luminaire/installation procedure and ensure the power is safely isolated before installing the luminaire.

Locate suitable area(s) for the installation

Release locking screw located on the base of the fitting and when removed Bracket should be released

Using the fixings provided drill and prepare two fixing holes for the mounting bracket to locate onto.

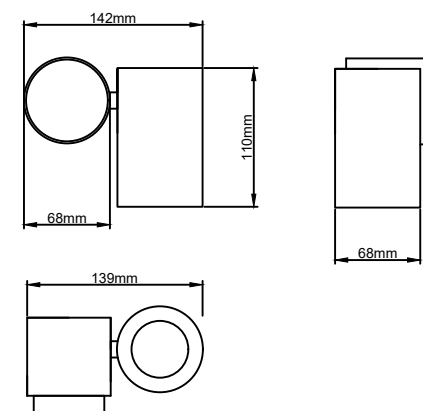
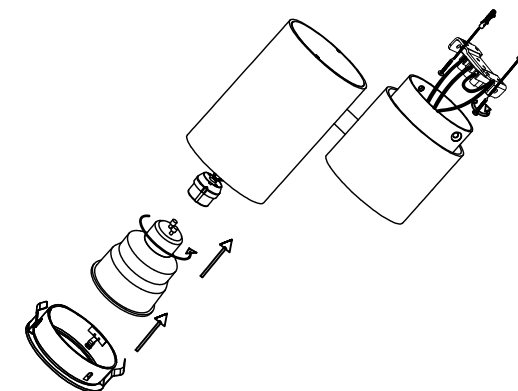
Now with mounting bracket in place fasten both fixing screws until bracket is secured to surface

Terminate the wiring L-Live (Brown), N-Neutral (Blue) and E-Earth (Green/Yellow) into terminal block, replace body onto mounting bracket and fasten locking screw screw to secure in place

To fit lamp gently pull down on front plate and fit GU10 lamp into holder, when lamp is connected fit lamp back into body with front plate attached (see fig 1)

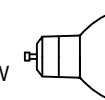
Turn on the power and test the luminaire.

Fig 1



## Lamp Details

Lamp Cap: GU10  
Max Wattage: 50W



Suitable for Retrofit LED Lamps

KSR Lighting Aftersales: 023 92 674343

E-mail: [aftersales@ksrlighting.com](mailto:aftersales@ksrlighting.com)

Mains Supply		Luminaire
Live - Brown		L - Brown
Earth - Green/Yellow		⊕ - Green/Yellow
Neutral - Blue		N - Blue

