

Installation Sheet

KSR1307 / 1308

Mini Carpio



Recessed LED Wall Lights

Available finish:- White or Black

Read these instructions before commencing installation. Please give these instructions to the owner/occupier after installation to retain for future reference/maintenance.

IP54 240VAC~50Hz 2W

These fittings are Class II and do not require an Earth Connection

Important Information

It is recommended that these luminaires are installed and fitted by a qualified electrician ensuring the installation complies with current IEE wiring regulations & local building control. These products are designed for connection to a 240V~50Hz supply.

Any faulty, broken or damaged luminaires should be replaced immediately.

KSR will not accept responsibility for any claims arising from a poor installation.

Please Note: The limited warranty shall be deemed null and void in the following circumstances: Failure by the installer, end user or any third party to exercise caution to protect any covered product or part from outside damage, adverse temperature (normal operating ambient temperature -20°C - +40°C), humidity conditions, fluctuations in the electrical system or physical abuse as well as failure related to workmanship in the installation of the products or parts.

Important User Advice

Always switch off mains supply before servicing.

Do not use Megger or similar high voltage instruments. Due to the fact this luminaire contains electronic components that may be damaged by high test voltages, they must be disconnected from the circuit before testing.

To prevent damage to the driver, do not mix with conventional magnetic ballasts on the same electrical circuit.

At the end of life the luminaire is classed as WEEE under directive 2014/30/EU and should be disposed of in accordance with local legislation.

Installation Procedure

Familiarize yourself with the luminaire, and ensure the mains power is turned off before installation.

For stud wall applications the plastic liner box is not required and can be discarded. Cut a 72mm (+/- 1mm) in the wall board.

Connect the luminaire to mains 240V supply following the diagram below, Brown - Live, Blue.

Hold back the spring clips and slot the fitting into the wall, release and allow the springs to pull the fitting back into place.

For solid wall installations cut or construct a 75mm hole, bed the plastic liner box in to the wall with mortar and allow it to set.

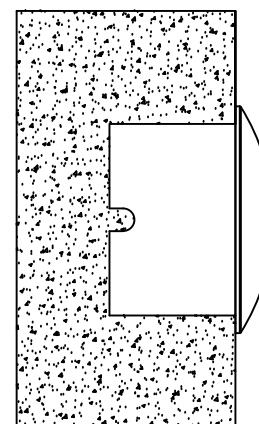
Connect the luminaire to mains 240V supply following the diagram below, Brown - Live, Blue.

Ensure a suitable IP rated connector is used when installing the product outside.

Hold back the springs and feed the fitting into the plastic liner until the luminaire is back against the wall.

Turn on the power and test the luminaire.

*Please note: Depending on the amount of fittings on a circuit you may have to upgrade the breaker to a 'C' or 'D' type to avoid nuisance tripping.

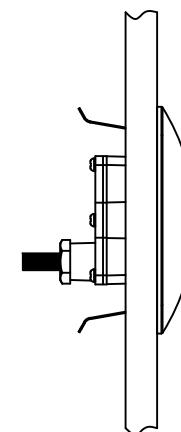


ØCut out



75mm

Solid Wall Cut Out

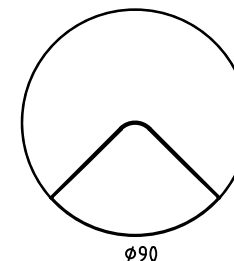


ØCut out

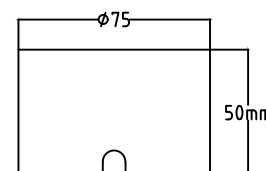
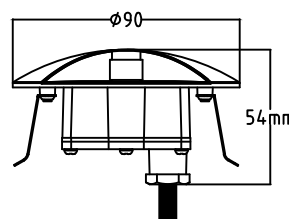


72mm +/-1mm

Stud Wall Cut Out



Ø90



Output Details

KSR1307 - 2W Integral LED Module, 16 lumen

KSR1308 - 2W Integral LED Module, 16 lumen

3000K Warm White

6000K Cool White

The light source of this luminaire is not replaceable; when the light source reaches its end of life the light source and control gear shall be replaced

This product contains a light source of energy efficiency class G

Mains Supply

Luminaire

Live - Brown L- Brown
Neutral - Blue N - Blue



KSR Lighting Ltd, Optimum House, Beeding Close, Southern Cross Trading Estate,
Bognor Regis, West Sussex, PO22 9TS.

KSR Lighting Aftersales: 023 92 674343

E-mail: aftersales@ksrlighting.com