

Read these instructions before commencing installation. Please give these instructions to the owner/occupier after installation to retain for future reference/maintenance.

IP44    240VAC~50Hz 1.2W LED

These fittings are Class II and do not require an Earth connection

## Important Information

It is recommended that these luminaires are installed and fitted by a qualified electrician ensuring the installation complies with current IEE wiring regulations & local building control. These products are designed for connection to a 240V~50Hz supply. Any faulty, broken or damaged luminaires should be replaced immediately. KSR will not accept responsibility for any claims arising from a poor installation. Please Note: The limited warranty shall be deemed null and void in the following circumstances: Failure by the installer, end user or any third party to exercise caution to protect any covered product or part from outside damage, adverse temperature (normal operating ambient temperature -20 ~ +40°C), humidity conditions, fluctuations in the electrical system or physical abuse as well as failure related to workmanship in the installation of the products or parts.

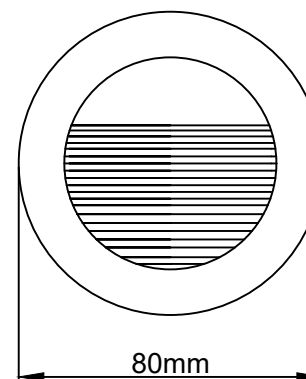
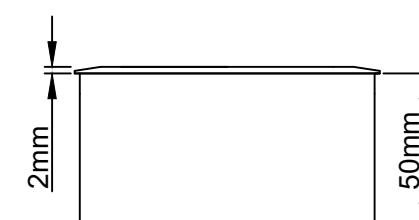
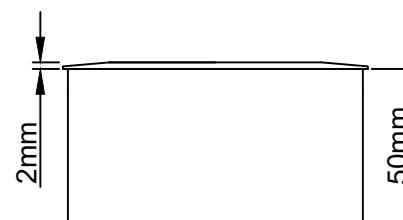
## General Maintenance

Please note this luminaire is non-dimmable. General maintenance and cleaning should be performed at least quarterly. Clean product outer using a damp cloth, the glass can be cleaned with hot soapy water, dried and buffed to a shine. Never use corrosive cleaners on or around the luminaires. KSR recommend protecting from exposure to natural elements in the form of a non-abrasive water repellent protection (eg. car wax). Do not use Megger or similar high voltage instruments. Due to the fact this luminaire contains electronic components that maybe damaged by high test voltages, they must be disconnected from the circuit before testing. Please ensure that the surface that the luminaire is installed into is not corrosive to aluminium. At the end of life the luminaire is classed as WEEE under directive 2014/30/EU and should be disposed of in accordance with local legislation.

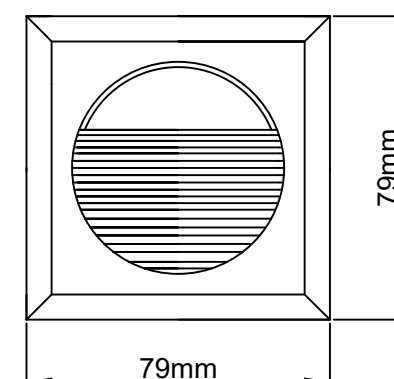
## Installation Procedure

Familiarize yourself with the luminaire and ensure the power is safely isolated before installing the fitting. Cut a 75mm hole for fitting the luminaire directly into an existing internal wall (without the plastic retainer) or cement the plastic retainer into new build external wall. Remove the retaining screws and cover. Terminate wiring to the circuit board using terminals. (Brown - Live and Blue - Neutral). Replace cover ensuring any supplied gaskets, etc are in place and secure using retaining screws. Ensure all the glands are tightened to ensure a water tight seal and place fitting into cut-out/retainer. Turn on mains supply and test.

Available Finishes: White or Black



KSR1300 & KSR1302



KSR1301 & KSR1303

## LED Details



LED Wattage: 1.2W LED Module  
KSR1300/302W/WHT - 3000K Warm White LED - 90lumens  
KSR1300/302C/WHT - 6000K Cool White LED - 100 lumens  
KSR1301/303W/WHT - 3000K Warm White LED - 90lumens  
KSR1301/303C/WHT - 6000K Cool White LED - 100 lumens

*This product contains a light source of energy efficiency class F.  
The LED light source and Control Gear in this product is non-replaceable.*



KSR Lighting Ltd, Optimum House, Beeding Close, Southern Cross Trading Estate,  
Bognor Regis, West Sussex, PO22 9TS.

KSR Lighting Aftersales: 023 92 674343  
E-mail: [aftersales@ksrlighting.com](mailto:aftersales@ksrlighting.com)