



Available Finish: Stainless Steel

Read these instructions before commencing installation. Please give these instructions to the owner/occupier after installation to retain for future reference/maintenance.

IP67 240VAC~50Hz 10W & 15W LED

## Important Information

It is recommended that these luminaires are installed and fitted by a qualified electrician ensuring the installation complies with current IEE wiring regulations & local building control. These products are designed for connection to a 240V~50Hz supply.

Any faulty, broken or damaged luminaires should be replaced immediately.

KSR will not accept responsibility for any claims arising from a poor installation.

Please Note: The limited warranty shall be deemed null and void in the following circumstances:

Failure by the installer, end user or any third party to exercise caution to protect any covered product or part from outside damage, adverse temperature (normal operating ambient temperature -15°C - +40°C), humidity conditions, fluctuations in the electrical system or physical abuse as well as failure related to workmanship in the installation of the products or parts.

## Important User Advice

Always switch off mains supply before servicing.

Do not use Megger or similar high voltage instruments. Due to the fact this luminaire contains electronic components that maybe damaged by high test voltages, they must be disconnected from the circuit before testing.

To prevent damage to the driver, do not mix with conventional magnetic ballasts on the same electrical circuit.

At the end of life the luminaire is classed as WEEE under directive 2014/30/EU and should be disposed of in accordance with local legislation.

## Installation Procedure

KSR recommends that you familiarise yourself with the installation.

Once you are satisfied:

Ensure the supply cable is suitable for in ground external applications and where required placed in a protective conduit.

Install sleeve into a concrete base or cut 109mm hole, making sure below the bottom of the sleeve is at least 300mm of suitable substrate to allow for drainage, failure to allow drainage or using unsuitable connectors can result in premature failure.

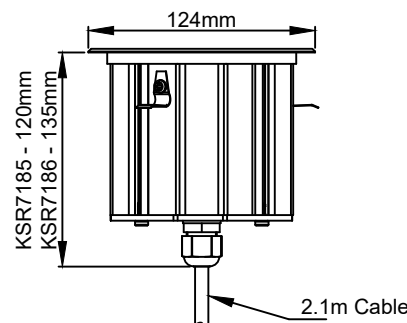
Ensure the top of the sleeve is raised to ground level and not in an area that is prone to flooding, so the luminaire will not be immersed in water once installed (Fig. 1).

Connect the luminaire to the mains supply using a suitable IP rated connector.

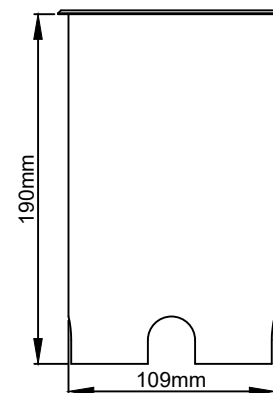
If installing in decking the mounting pot is not required and can be discarded. Cut a 110mm hole in the deck boards.

Offer the main body of the fitting into the ground sleeve.

Turn on mains supply and test luminaire is working correctly.



Luminaire



Mounting Sleeve

## Decking Installation

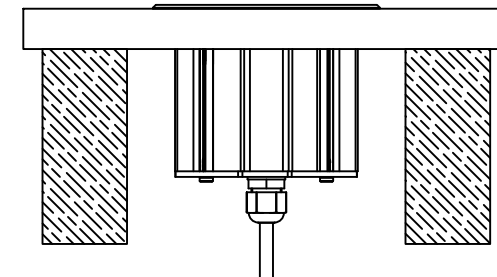
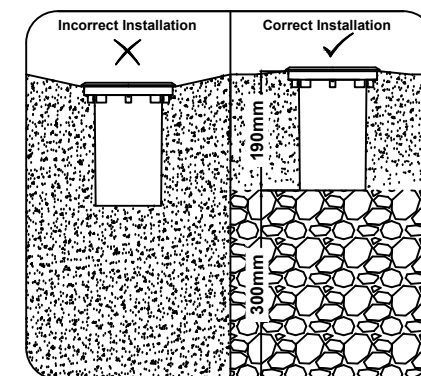


Fig. 1  
Concrete Installation



## Details

LED Fixed Module  
KSR7185 10W Warm White 3000K 750 Lumens  
KSR7186 15W Warm White 3000K 1100 Lumens

The light source of this luminaire are replaceable; when the light source or reaches its end of life the whole luminaire can be serviced

This product contains a light source of energy efficiency class F

KSR Lighting Aftersales: 023 92 674343

E-mail: aftersales@ksrlighting.com



Luminaire	Mains Supply
L - Brown	Live
N - Blue	Neutral
Green/Yellow	Earth