

Read these instructions before commencing installation & retain them for future reference.

IP54    0.3m  240V 2W

These fittings are Class I and require an Earth connection

Important Information



It is recommended that luminaires are installed and fitted by a qualified electrician ensuring the installation complies with current IEE wiring regulations & local building control. These products are designed for connection to a 240V 50Hz supply. Any broken or damaged parts should be replaced as soon as possible. KSR will not accept responsibility for any claims arising from a poor installation.

General Maintenance

General maintenance and cleaning should be performed at least quarterly. Clean product outer using a damp cloth, do not use abrasive cleaners as this may damage the finish. After any maintenance, remember to check all seals are intact.

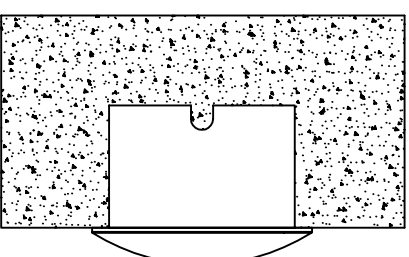
Installation Procedure

Familiarize yourself with the luminaire, and ensure the mains power is turned off before installation.
For stud wall applications the plastic liner box is not required and can be discarded. Cut a 72mm (+/- 1mm) in the wall board.
Connect the luminaire to mains 240V supply following the diagram below,
Brown - Live, Blue.
Hold back the spring clips and slot the fitting into the wall, release and allow the springs to pull the fitting back into place.
For solid wall installations cut or construct a 75mm hole, bed the plastic liner box in to the wall with mortar and allow it to set.
Connect the luminaire to mains 240V supply following the diagram below,
Brown - Live, Blue.
Ensure a suitable IP rated connector is used when installing the product outside.
Hold back the springs and feed the fitting into the plastic liner until the luminaire is back against the wall.
Turn on the power and test the luminaire.

Mains Supply	Luminaire
Live - Brown 	L - Brown
Neutral - Blue 	N - Blue

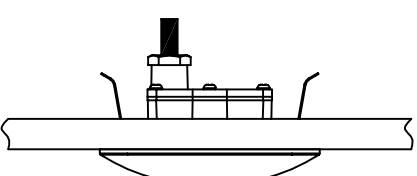


Available finish:- White or Black



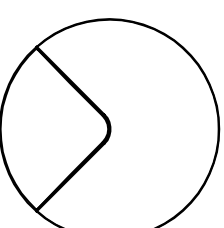
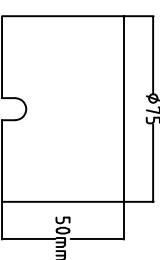
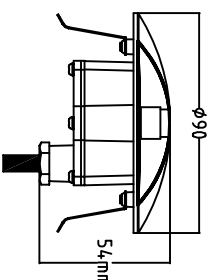
ØCut out
75mm

Solid Wall Cut Out



ØCut out
72mm +/-1mm

Stud Wall Cut Out



Output Details

KSR1307 - 2W Integral LED Module, Black
KSR1308 - 2W Integral LED Module, Black
Non Replaceable
3000K Warm White
6000K Cool White

KSR Lighting Aftersales: 023 92 674343
E-mail: info@ksr-lighting.co.uk

KSR
LIGHTING