

Installation Sheet

KSR6540-6541

Read these instructions before commencing installation. Please give these instructions to the owner/occupier after installation to retain for future reference/maintenance.

IP20 Ⓢ UK Ⓢ Ⓢ Ⓢ 240VAC~50HZ

Important Information

It is recommended that the track system is installed and fitted by a qualified electrician ensuring the installation complies to current IEE wiring regulations & local building control. These products are designed for use with the Escala Pro single circuit track system only. Any damaged parts should be replaced as soon as possible. KSR will not accept responsibility for any claims arising from a sub-standard installation.

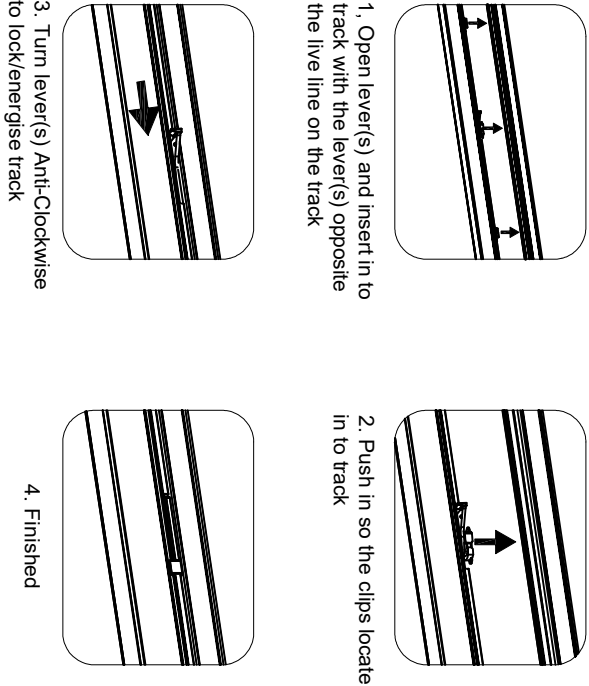
Important User Advice

Always switch off mains supply before installing or servicing.
This product is designed to be used indoors only.

Installation Procedure

Familiarize yourself with the way the luminaire attaches to the track and ensuring the correct polarity.
KSR open the lever(s) and insert the luminaire into track with the locking lever opposite the Live side (shown by the line on the track) then turn the lever anti-clockwise until the locking lever locks into the track lever touching the track, never force the lever see Fig.1.

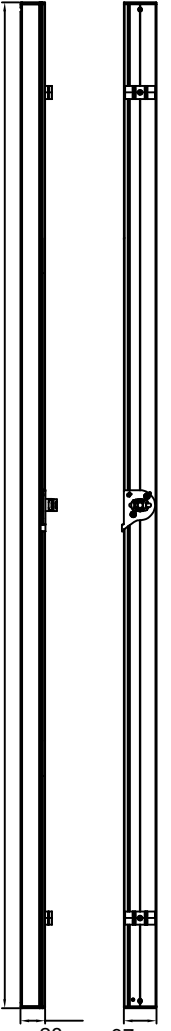
Fig. 1



Escala Pro

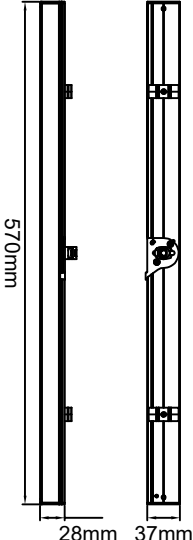
Linear Track Fitting

Available Finish: White



KSR6541

KSR6540



Lamp Details				
Product Code	Wattage	CCT	Lumens	CRI Ra:
KSR6540	18W	4000K	1554	>94
KSR6541	36W	4000K	3000	>94

The light source of this luminaire is not replaceable;
when the light source reaches its end of life the whole luminaire shall be replaced



KSR Lighting Aftersales: 023 92 674343
E-mail: aftersales@ksrlighting.com

KSR Lighting Ltd, Unit E Hazleton Interchange, Lakesmere Road, Horndean, Hampshire, PO8 9JU